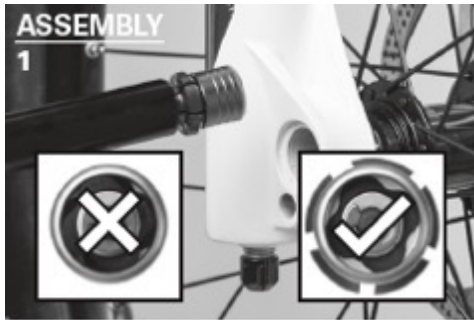
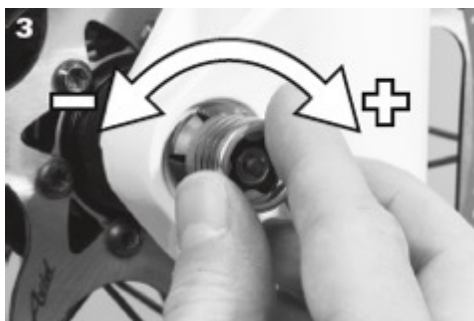


# Q-LOC ASSEMBLY



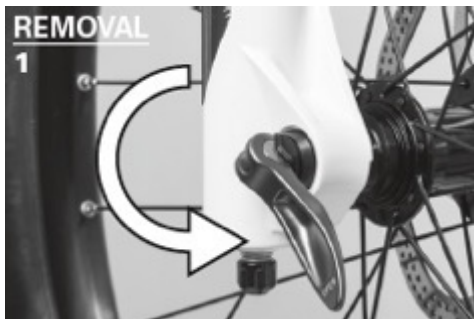
1. Check the segmented flange to be expanded before installation and open the lever completely.

2. Slide in the axle until it "clicks". **Make sure the segmented flange is expanded.**



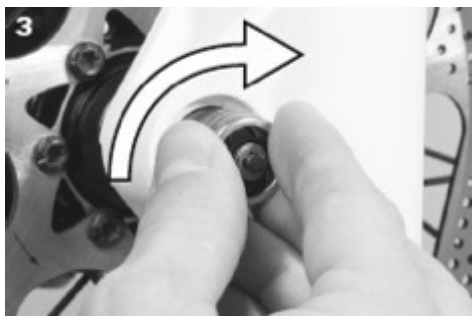
3. Set the tension of the nut until the flange is flush with the dropout.

4. Close the lever completely. Check if it's firmly seated. Re-tighten the nut if necessary.



1. Open the lever completely.

2. Press adjust nut until segmented flange retracts.



3. Open the lever completely. Turn nut clockwise until flange stays latched.

4. Pull out the axle.

